



350 Lordship Lane, London, SE22 8LZ

Location

The premises are located on Lordship Lane, close to Dulwich Park and Dulwich Village. The area benefits from a large residential catchment and is a popular drinking and dining destination during weekdays and weekends, with a wide-ranging mix of restaurants, bars, pubs and retail stores situated on Lordship Lane. Nearby occupiers include Sainsbury's, The Plough, Mathnasium and numerous other independent and corporate retail and leisure operators.

For a greater understanding of the location please review the following link: [Google Street View](#)

Description

The premises occupy a single fronted unit and are arranged over ground floor only. The premises will be handed in its existing condition.

The approximate gross internal areas are as follows;

Ground Floor	552 sq ft	51 sq m
--------------	-----------	---------

Tenure

The premises are available on a new lease for terms to be agreed.

Rent

Rental offers in the region of £30,000 pax will be considered.

Planning

The premises benefit from E Class Use (A1).

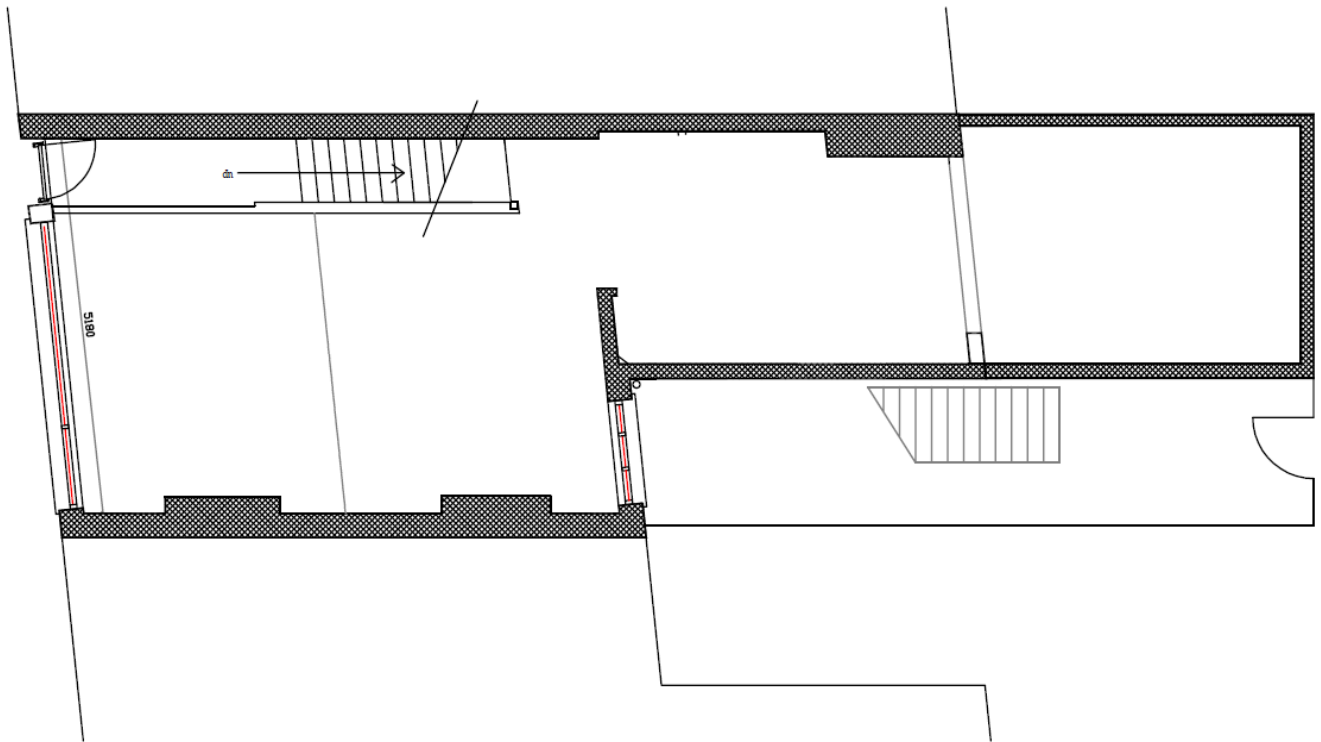
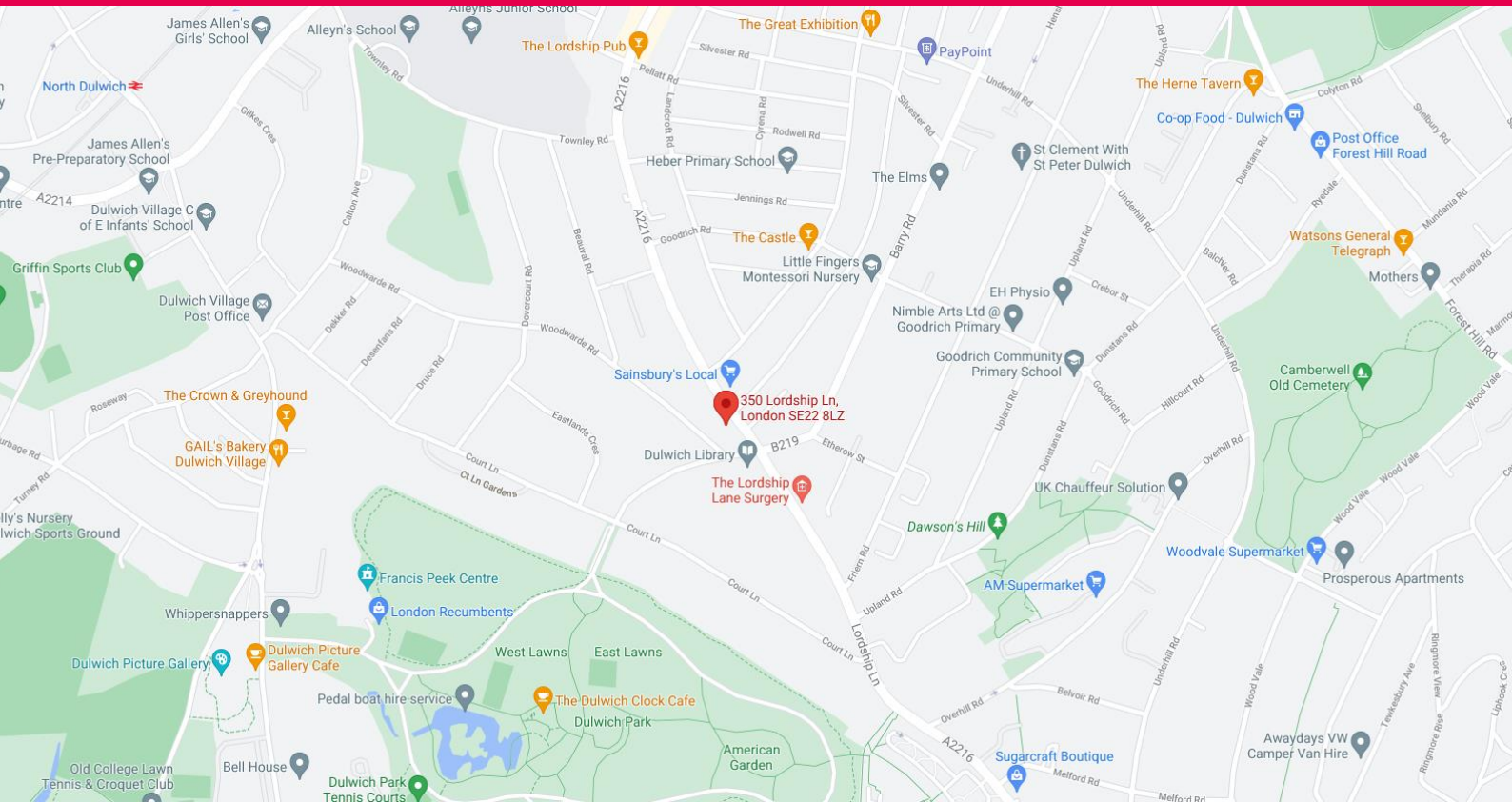
Further Details

An EPC has been commissioned and can be arranged upon request. Unless otherwise stated, each party is to bear its own legal costs, VAT may be applicable, and possession will be available upon completion of legal formalities.

Viewing is strictly by prior appointment with sole agent Davis Coffey Lyons: dcl.co.uk

Louie Gazdar
Agent
0207 299 0745
lgazdar@dcl.co.uk

Rob Meadows
Executive Director
0207 299 0738
rmeadows@dcl.co.uk



Davis Coffery Lyons provides these particulars as a general guide to the property, which is offered subject to contract and to being available. These particulars do not constitute an offer or a contract or any part of an offer or contract. We (or anyone in our employ) do not imply, make or give any representation, guarantee or warranty whatsoever relating to the terms and neither does our client (the vendor or lessor). Any intending purchaser must by inspection or otherwise, satisfy himself as to the correctness of any of the statements contained in the particulars. All negotiations must be conducted through Davis Coffery Lyons Limited.