

BROADGATE

100 Liverpool Street

26.2 million Broadgate footfall per year



Station footfall

120m

Total annual footfall at Broadgate's Liverpool St Station



Campus

42k

workers on campus.



Proximity

11.5m

Accessible to 11.5m people in less than an hour

BROADGATE USER PROFILE

OCCUPANCY

c7pppts

Less vacancy at Broadgate vs City office average

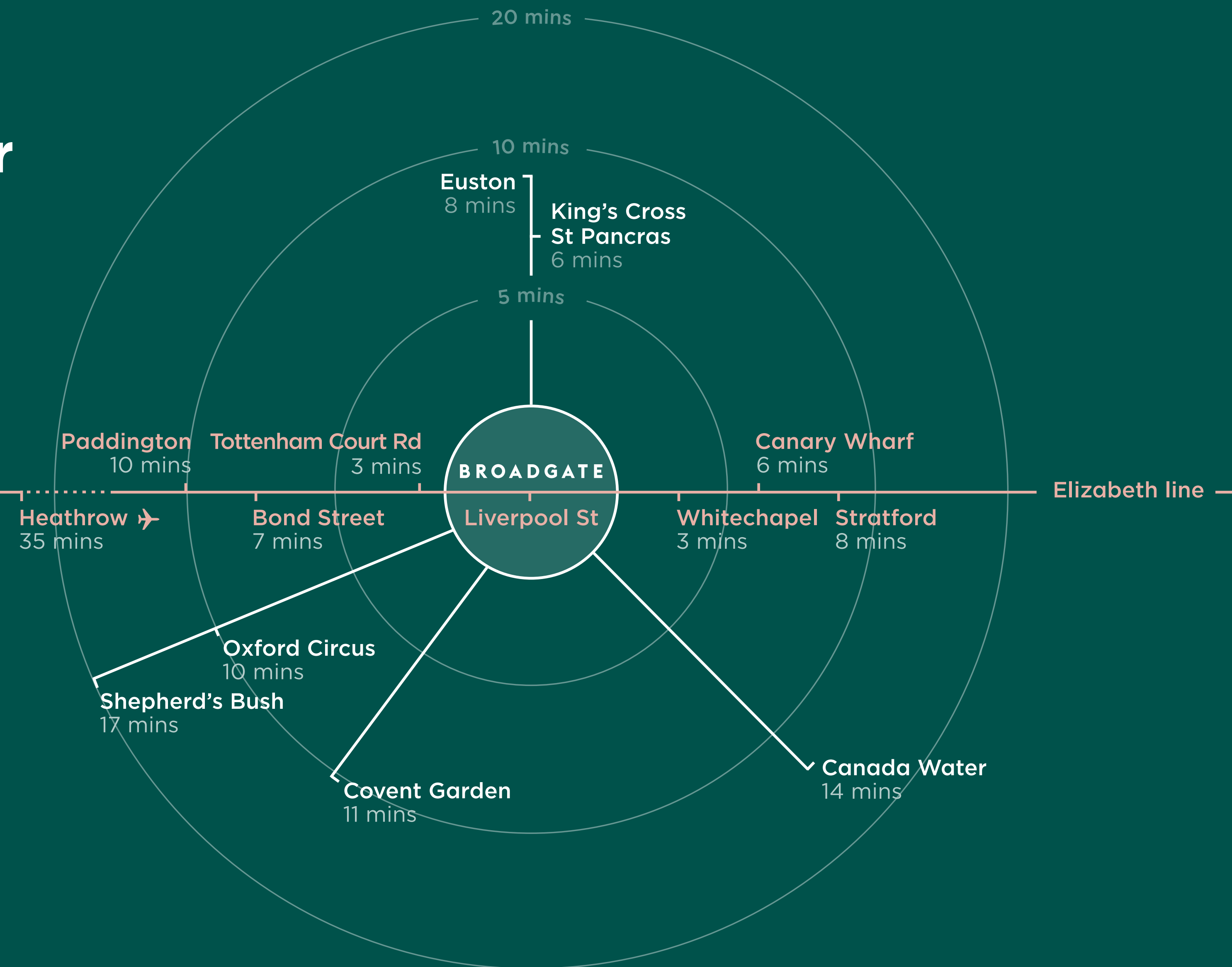
DAYS IN THE OFFICE

+1.0pw

Broadgate workers spend more days in the office per week vs the Central London average

11.5M visitors can reach Broadgate in under 1 hour

From platform to store front in as little as 100 steps



- Above Liverpool Street, one of London's busiest and best located stations.
- The primary station serving the City of London with direct access to 3 airports, 5 underground lines, and the National Rail network.
- Accessible to 11.5m people in less than an hour.
- Liverpool Street to Bond Street, the heart of the West End, in 8 minutes.
- Elizabeth line (Crossrail) opened in 2022 transforming central London connectivity.

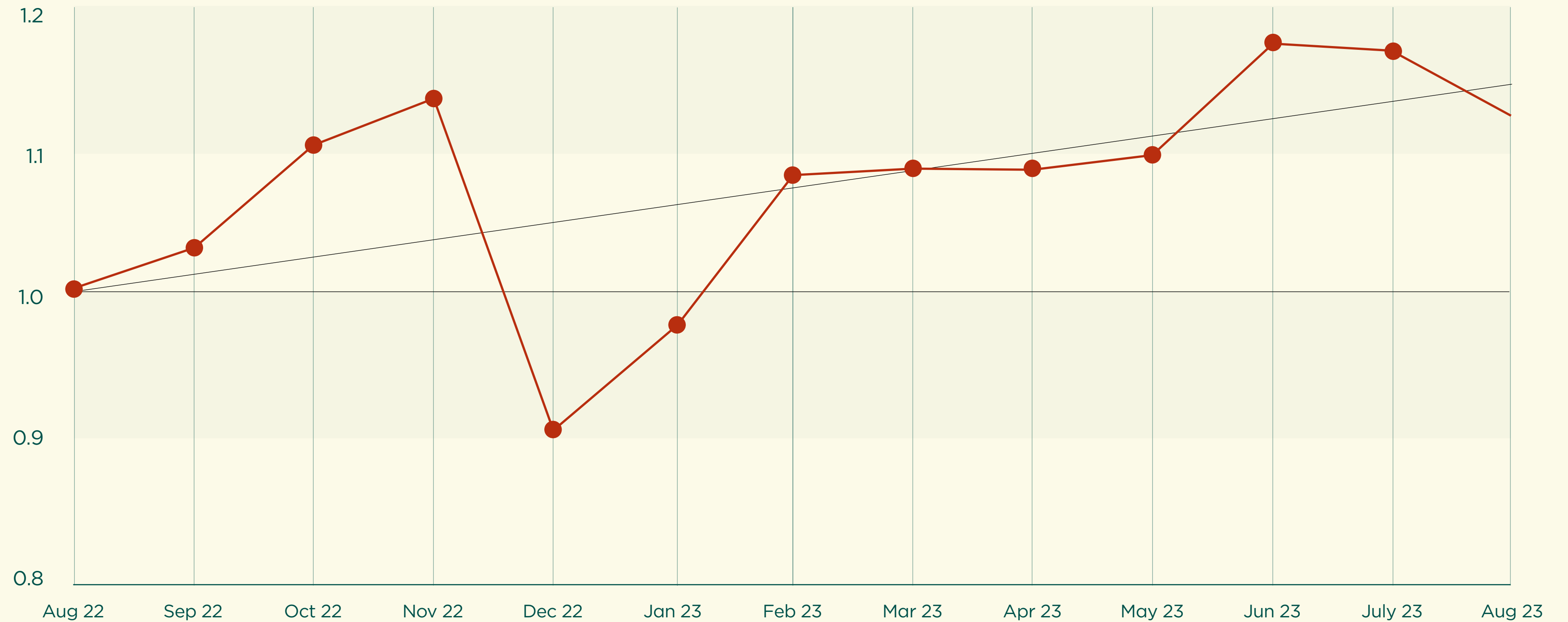
Broadgate is pulling in a bigger audience

Broadgate footfall up c15% YoY, having stabilized post-Covid

Footfall on Campus is +20% in the 12 months since the Elizabeth Line opened

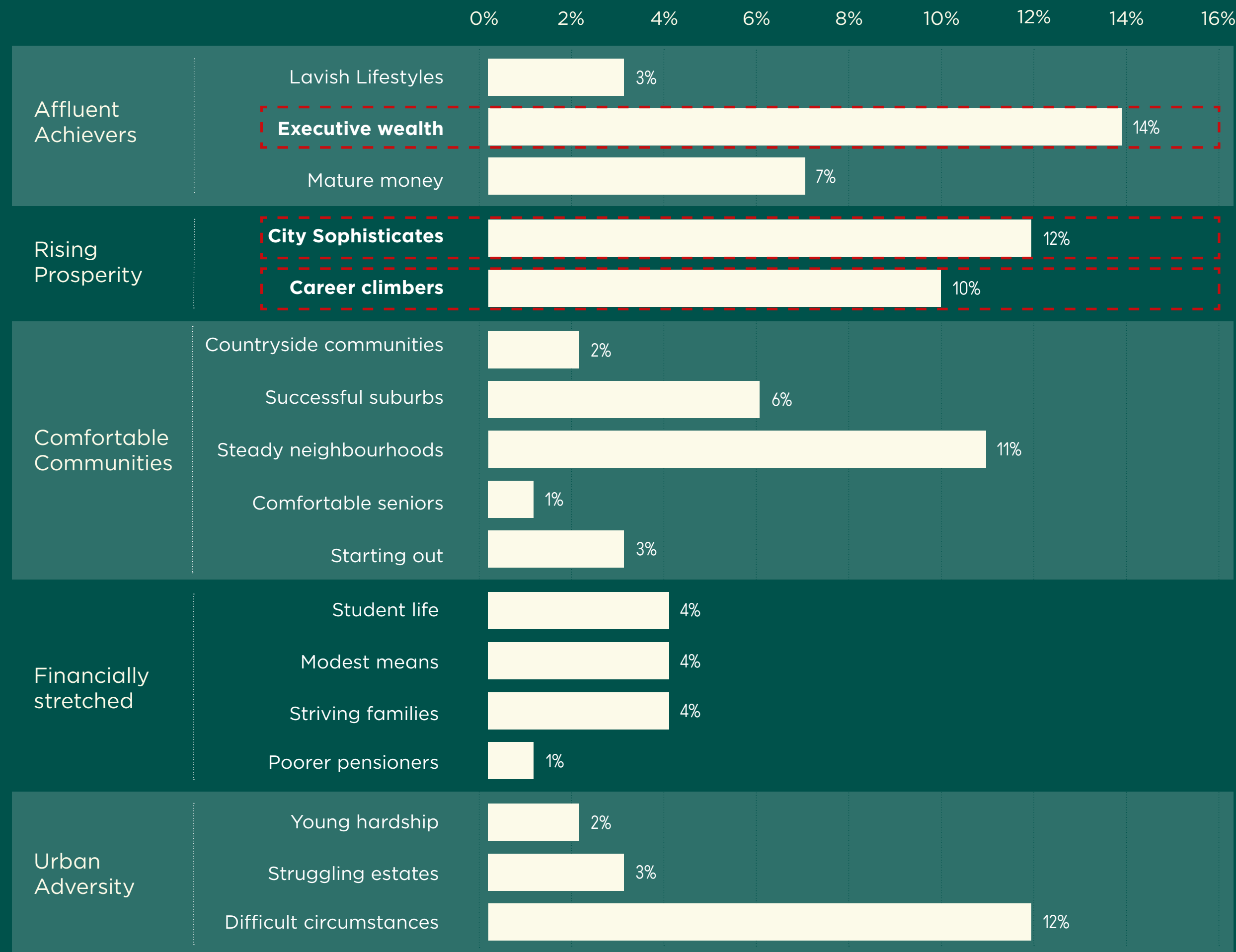
LFL Campus sales are +11% in the 12 months since the Elizabeth Line opened

Footfall across the campus for Q3 2023 55% higher than Q4 2021



¹ BRITISH LAND FOOTFALL DATA

Affluent Broadgate visitors engage with F&B



Average Trip Values:

Executive Wealth

£63.83

25% Higher Disposable Incomes than average

City Sophisticates

£53.28

1.4x more likely to enjoy Eating Out

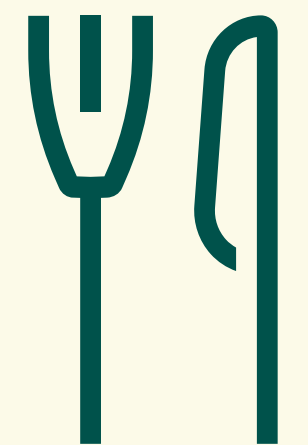
Career Climbers

£54.40

1.8x more likely to Visit Premium Pub

62%

of campus workers engage with the campus' F&B weekly





**Bartholomew Fair at Broadgate
attracted thousands this Summer**



**Curated stores, dining and
experience for 7-day trade**



**45+ brands have opened at
Broadgate in the past 3 years**

**50+ new office customers
have joined Broadgate**



**Acres of life-enriching parks and
squares for visitors to enjoy**

60+ brands at Broadgate

EVERYMAN

GAUCHO

REBEL

EATALY
alti cibi

FRANCO
MANCA

REVOLVE
BRASSERIE

SPACE NK
APOTHECARY LONDON

L'OCCITANE
EN PROVENCE

GRIND

W
Waterstones

REISS

THE BODY SHOP

techexpress
by WHSmith

GANT

Kiehl's
SINCE 1851

NEOM
ORGANICS • LONDON

REDEMPTION
ROASTERS

BEANY
GREEN

YOLK

Dune
LONDON

BARAKA
RESTAURANT & BAR

SHORYU

WATCHES OF
SWITZERLAND
SINCE 1924

TIMOTHY OULTON

NYOKEE
ITALIAN EATERY & cafe

★ PRET ★

JR
JOHN REED
FITNESS

Charbonnel
et Walker
Established 1875

José
Pizarro

MRS FOGG'S
DOCKSIDE
DRINKERY
& DISTILLERY

4.5m sq ft of office space at Broadgate

workday



APPDYNAMICS

JLL

Levin

Maven

McCANN

kyndryl

BMO



ZEGO

HRT

BIG

DocuSign



SMBC

SYMPHONY

monzo

Milbank

braze

TechTarget



mimecast

8
RETAIL SPACE



OLD STREET

SHOREDITCH

BARBICAN

SPITAL

MOORGATE

LIVERPOOL STREET

LIVERPOOL STREET

KEY

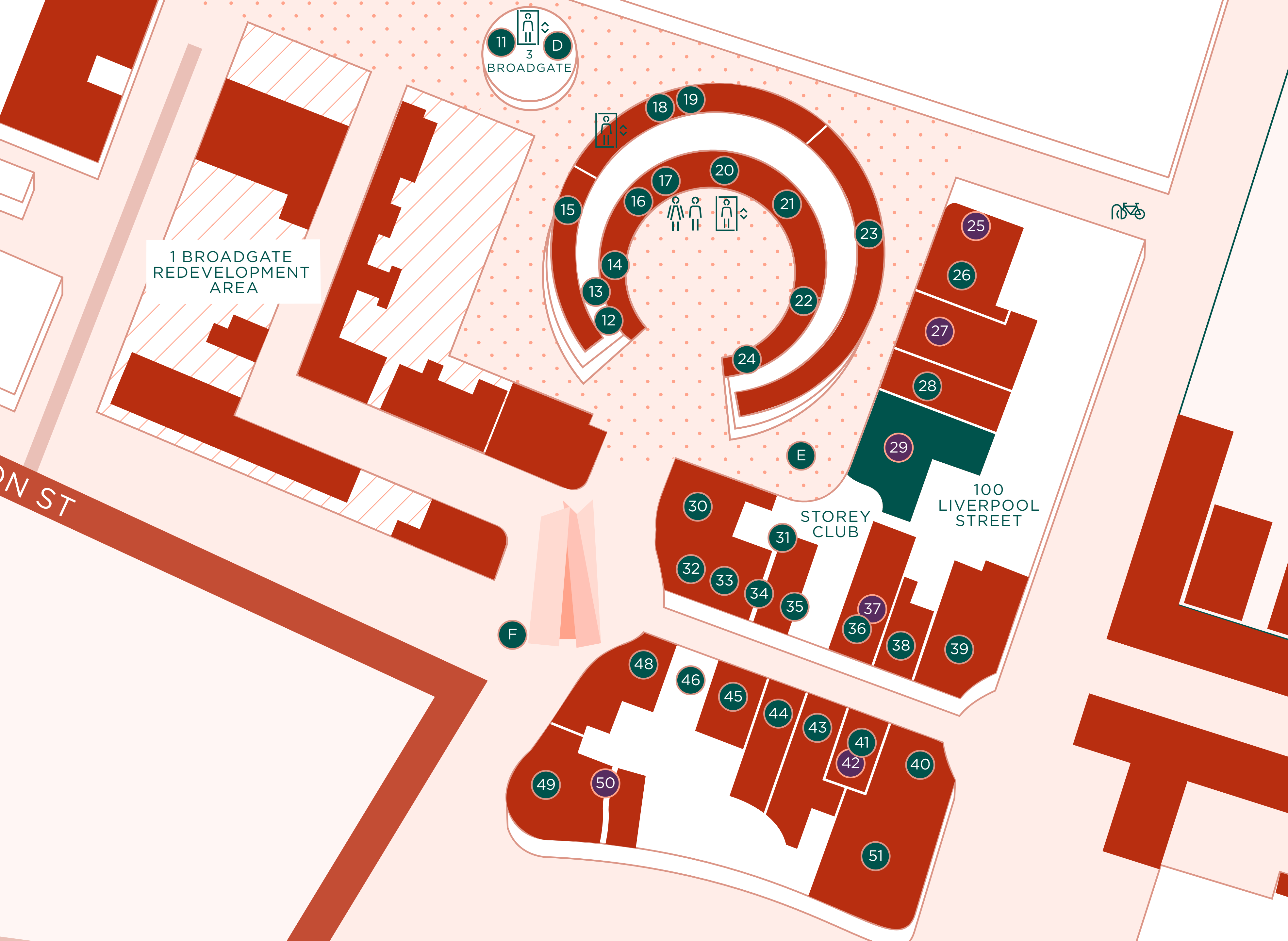
- TAXI POINT
- LIFTS
- DDA LIFTS
- BIKE PARKING
- BROMPTON BIKE HIRE
- TABLE TENNIS
- WC
- ATM
- WATER FOUNTAIN
- TUBE STATION
- TRAIN STATION
- CAMPUS
- GREEN AREAS
- PUBLIC SPACES
- REDEVELOPMENT

ART

- A BROADGATE VENUS, FERNANDO BOTERO
- B THE BROAD FAMILY, XAVIER CORBERO
- C EYE-I, BRUCE MCLEAN
- D LOOM, RONAN DEVLIN & MICHAEL FLÜCKIGER
- E LEAPING HARE ON CRESCENT AND BELL, BARRY FLANAGAN RA
- F FULCRUM, RICHARD SERRA
- G ALCHEMY, LINCOLN SELIGMAN
- H CERAMIC SCULPTURE, JOAN GARDY ARTIGAS
- J GANPATI AND DEVI, STEPHEN COX RA

RETAILERS

- 3 FARMER J
- 4 NYOKEE
- 5 EVERYMAN CINEMA
- 6 YOLK
- 7 BAR DOURO
- 8 BARAKKA
- 9 BUTTERSCOTCH
- 10 GAUCHO
- 11 REDEMPTION ROASTERS
- 12 IREBEL
- 13 BARBER & BLOW
- 14 FRANCO MANCA
- 15 BEANY GREEN
- 16 SHORYU RAMEN
- 17 COMPTOIR LIBANAIS
- 18 YAUATCHA PATISSERIE
- 19 YAUATCHA
- 20 THE BOTANIST
- 21 JOSÉ PIZZARO
- 22 MR FOGG'S CITY TAVERN
- 23 ISLAND POKE
- 24 GRIND
- 26 REVOLVE
- 28 SHIRO
- 30 WATCHES OF SWITZERLAND
- 31 BLOOMSYARD
- 32 DUNE
- 33 TECH EXPRESS
- 34 CHARBONNEL ET WALKER
- 35 STARBUCKS
- 36 NEOM
- 38 L'OCCITANE
- 39 GANT
- 40 MONICA VINADER
- 41 REISS
- 43 SPACE NK
- 44 PRET A MANGER
- 45 KIEHL'S
- 46 THE BODY SHOP
- 48 TOMMY HILFIGER
- 49 TIMOTHY OULTON
- 51 JOHN REED
- 52 EATALY
- 53 BLACK SHEEP COFFEE
- 54 HONI POKE
- 55 NEAT BURGER
- 56 THE NEST
- 57 OPTIX
- 58 UNCORKED
- 59 DESTINATION SKIN
- 61 SHIROMA
- 62 ALL BAR ONE
- 63 THE TAPSTER
- 64 TANK AND PADDLE
- 65 THE SWEET SPOT
- 67 PRET A MANGER
- 70 WHITE HORSE



11
3
D
BROADGATE

1 BROADGATE
REDEVELOPMENT
AREA

STOREY
CLUB

100
LIVERPOOL
STREET

- 11 REDEMPTION ROASTERS
- 12 TREBEL
- 13 BARBER & BLOW
- 14 FRANCO MANCA
- 15 BEANY GREEN
- 16 SHORYU RAMEN
- 17 COMPTOIR LIBANAIS
- 18 YAUATCHA PATISSERIE
- 19 YAUATCHA
- 20 THE BOTANIST
- 21 JOSÉ PIZZARO
- 22 MRS FOGG'S
- 23 ISLAND POKE
- 24 GRIND
- 26 REVOLVE
- 28 SHIRO
- 30 WATCHES OF SWITZERLAND
- 31 BLOOMSYARD
- 32 DUNE
- 33 TECH EXPRESS
- 34 CHARBONNEL ET WALKER
- 35 STARBUCKS
- 36 NEOM
- 38 L'OCCITANE
- 39 GANT
- 40 MONICA VINADER
- 41 REISS
- 43 SPACE NK
- 44 PRET A MANGER
- 45 KIEHL'S
- 46 THE BODY SHOP
- 48 TOMMY HILFIGER
- 49 TIMOTHY OULTON
- 51 JOHN REED
- 58 UNCORKED
- 59 DESTINATION SKIN
- 61 SHIROMA
- 62 ALL BAR ONE
- 63 THE TAPSTER
- 64 TANK AND PADDLE
- 65 THE SWEET SPOT
- 67 PRET A MANGER
- 70 WHITE HORSE



100 Liverpool Street

has 420,000 sq ft of office space fully let to



90,000 sq ft of retail and restaurant space

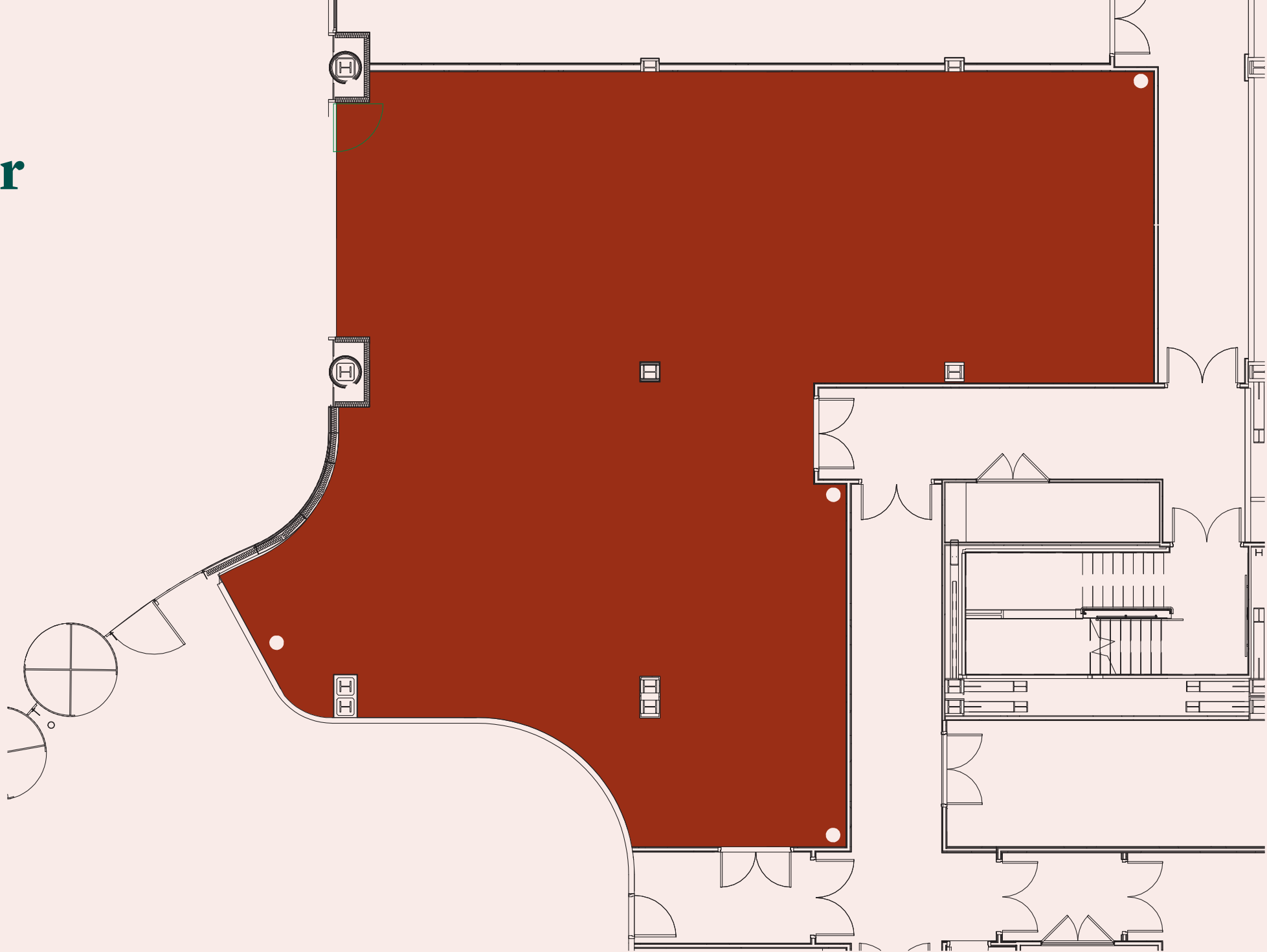


View from unit 5 to the new office entrance for 1 Broadgate

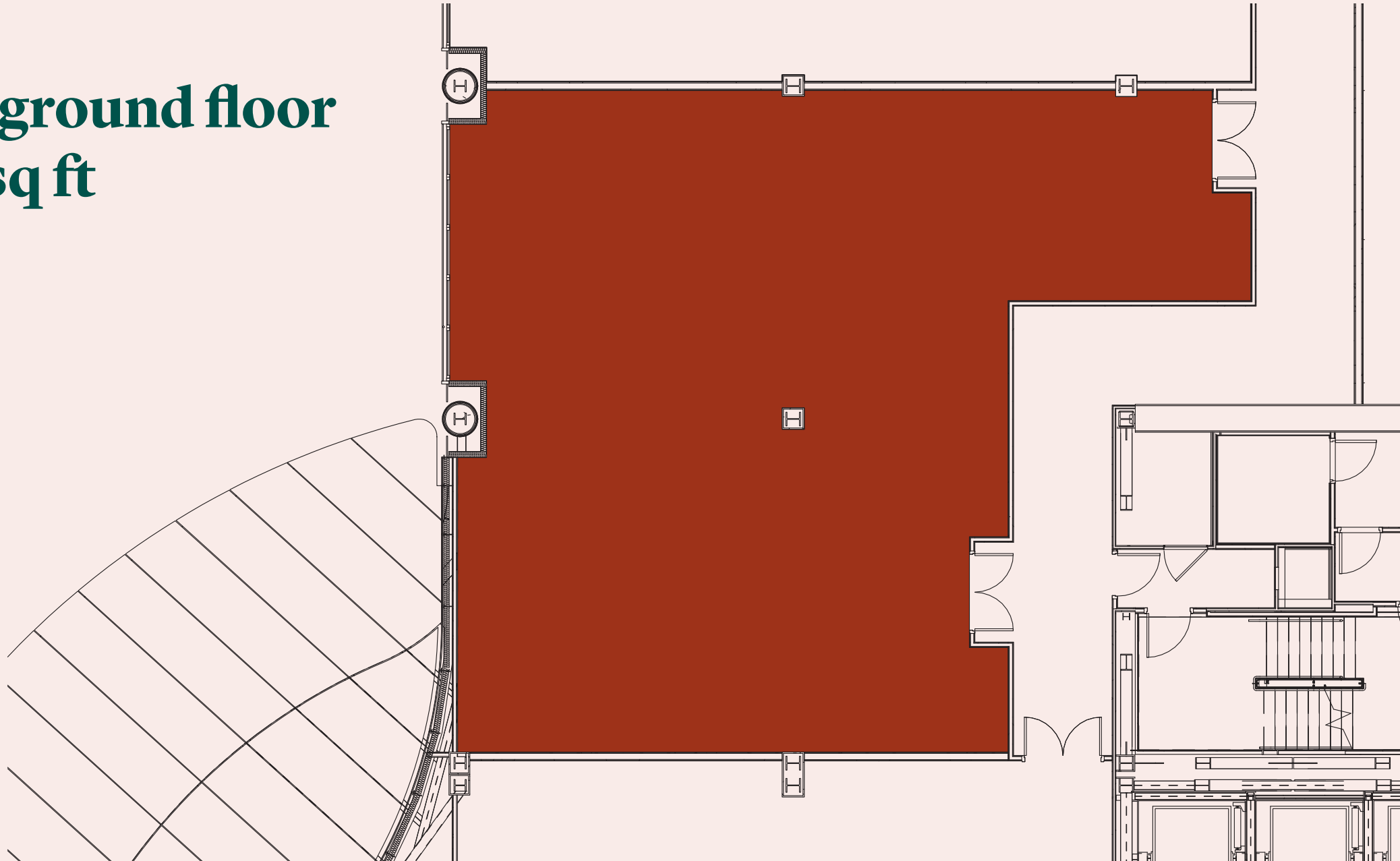
100 Liverpool Street Unit 5 Floorplans



Ground floor
3,035 sq ft



Upper ground floor
2,206 sq ft





Broadgate retail offer is constantly evolving

New brands coming soon



HACKETT
LONDON

LOS
MOCHIS


optix
at Broadgate

The Daisy Green collection was born at Broadgate. We spotted an opportunity and British Land fully supported us in making it happen, allowing our business to grow with our very first official café – Beany Green.

Prue Freeman

An aerial view of a modern, multi-story office building with a distinctive architectural design. The building features a series of terraced levels with green roofs, each adorned with plants and flowers. The facade is composed of large glass windows and vertical wooden slats. In the foreground, a curved walkway with a glass railing and a small courtyard area with a table and chairs are visible. The surrounding urban environment includes other modern buildings and a street with pedestrians.

**1 Broadgate has 45,000 sq ft of retail space
450,000 sq ft of office space pre let to A&O and JLL**



**A new landmark at 2 Finsbury Avenue
700,000 sq ft mixed-use development.**

◆
Coming in 2027

Contact



ALICE KEOWN

M 07469 852 143

alice.keown@britishland.com



DAVID BANNISTER

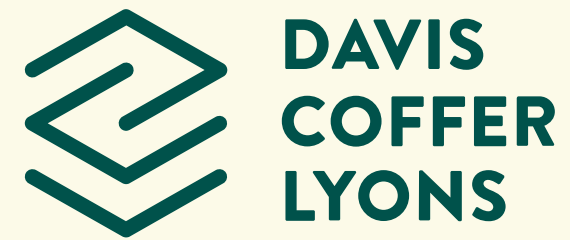
M 07974 756 759

david.bannister@savills.com

LAURIE STOKES

M 07834 992 340

laurie.stokes@savills.com



ABBEY ROUKE

M 07495 894 155

arooke@dcl.co.uk

LOUIE GAZDAR

M 07908 119 441

lgazdar@dcl.co.uk



The British Land Company PLC and their agents give notice that: These particulars are set out as a general outline only, for the guidance of intending purchasers or lessees and do not constitute, nor constitute part of, an offer or contract; all descriptions, images, dimensions, references to condition and necessary permission for use in occupation and other details are given without responsibility, and any intending purchasers or tenants should not rely on them as statements or representations of fact, but must satisfy themselves by inspection or otherwise as to the correctness of each of them. All floor areas and measurements are approximate November 2023.